



Multi-Discipline Supports

Installation Guide



PLEASE NOTE:

AVEVA Solutions has a policy of continuing product development: therefore, the information contained in this document may be subject to change without notice.

AVEVA SOLUTIONS MAKES NO WARRANTY OF ANY KIND WITH REGARD TO THIS DOCUMENT, INCLUDING BUT NOT LIMITED TO, THE IMPLIED WARRANTIES OF MERCHANTABILITY AND FITNESS FOR A PARTICULAR PURPOSE.

While every effort has been made to verify the accuracy of this document, AVEVA Solutions shall not be liable for errors contained herein or direct, indirect, special, incidental or consequential damages in connection with the furnishing, performance or use of this material.

This manual provides documentation relating to products to which you may not have access or which may not be licensed to you. For further information on which Products are licensed to you please refer to your licence conditions.

© Copyright 1991 through 2006 AVEVA Solutions Limited

All rights reserved. No part of this document may be reproduced, stored in a retrieval system or transmitted, in any form or by any means, electronic, mechanical, photocopying, recording or otherwise, without prior written permission of AVEVA Solutions.

The software programs described in this document are confidential information and proprietary products of AVEVA Solutions or its licensors.

For details of AVEVA's worldwide sales and support offices, see our website at
<http://www.AVEVA.com>

Contents

1	Introduction.....	1
	1.1 Contents of the Release	1
2	Vantage Software Requirements.....	2
	2.1 Vantage Plant Design.....	2
	2.2 Vantage Marine.....	2
3	Installation.....	3
	3.1 Software Installation.....	3
	3.1.1 Default Installation.....	5
	3.1.2 Typical Installation.....	6
	3.1.3 Custom Installation.....	7
	3.1.4 Configure & Associate Options.....	9
	3.1.5 Confirm Selections.....	9
	3.1.6 Download and Finish all Installation Type	10
	3.2 Installed Configuration.....	11
	3.2.1 Files Configured by the Install	11
	3.2.2 Start Menu entries, MDS.....	11
	3.3 Manual Configuration of the Product and Product Environment Variables	12
4	Test Projects	15
5	Enhancements	16
	Appendix H: Installation-Created batFiles	18

1 Introduction

This guide explains how to install and set up the MDS11.6 Alpha release application. This version is available on Microsoft Windows 200 and Windows XP.

1.1 Contents of the Release

This release is a full release consisting of:

- Directories containing updated application software called , pdmsui, pdmsui11_5, pdmsui11_6, pmlib, pmlib11_5, pmlib11_6, iso_symbols and splash.
- A project directory containing an updated PDMS projects for the MDS project released at MDS11.6
- A client's project directory with suitable projects to load and test the application.
- A manuals directory containing all the necessary documentation required to install, set up and run the MDS application. Please note that these documents have not been yet upgraded from the previous version of MDS, namely MDS4.1.sp1. A copy of this document is contained in this directory.

2 Vantage Software Requirements

2.1 Vantage Plant Design

It is a pre requisite of this MDS release that the installation of the VPD software being used is the following:

- Vantage Plant Design 11.6.sp1

It is also a pre-requisite that for drawing production of MDS that the following AVEVA software is installed

- Vantage Area Based ADP 11.6

The MDS ABA Draft applicationware will not function without ABA application being present.

2.2 Vantage Marine

It is a pre requisite of this MDS release that the installation of the VPD software being used is the following:

- Vantage Marine 11.6 Outfitting with PDMS

It is also a pre-requisite that for drawing production of MDS that the following AVEVA software is installed

- Vantage Area Based ADP 11.6

The MDS ABA Draft applicationware will not function without ABA application being present.

3 Installation

This product requires and enhances the base PDMS or VANTAGE Marine products – henceforth known as the “base” product in this document.

You should only install this product AFTER installing the version of these base products with which you wish to work.

Installing this product to work with the base product creates the “enhanced” product.

To create the enhanced base product, there are two install strategies;
install into,

- a separate product folder (the recommended default)

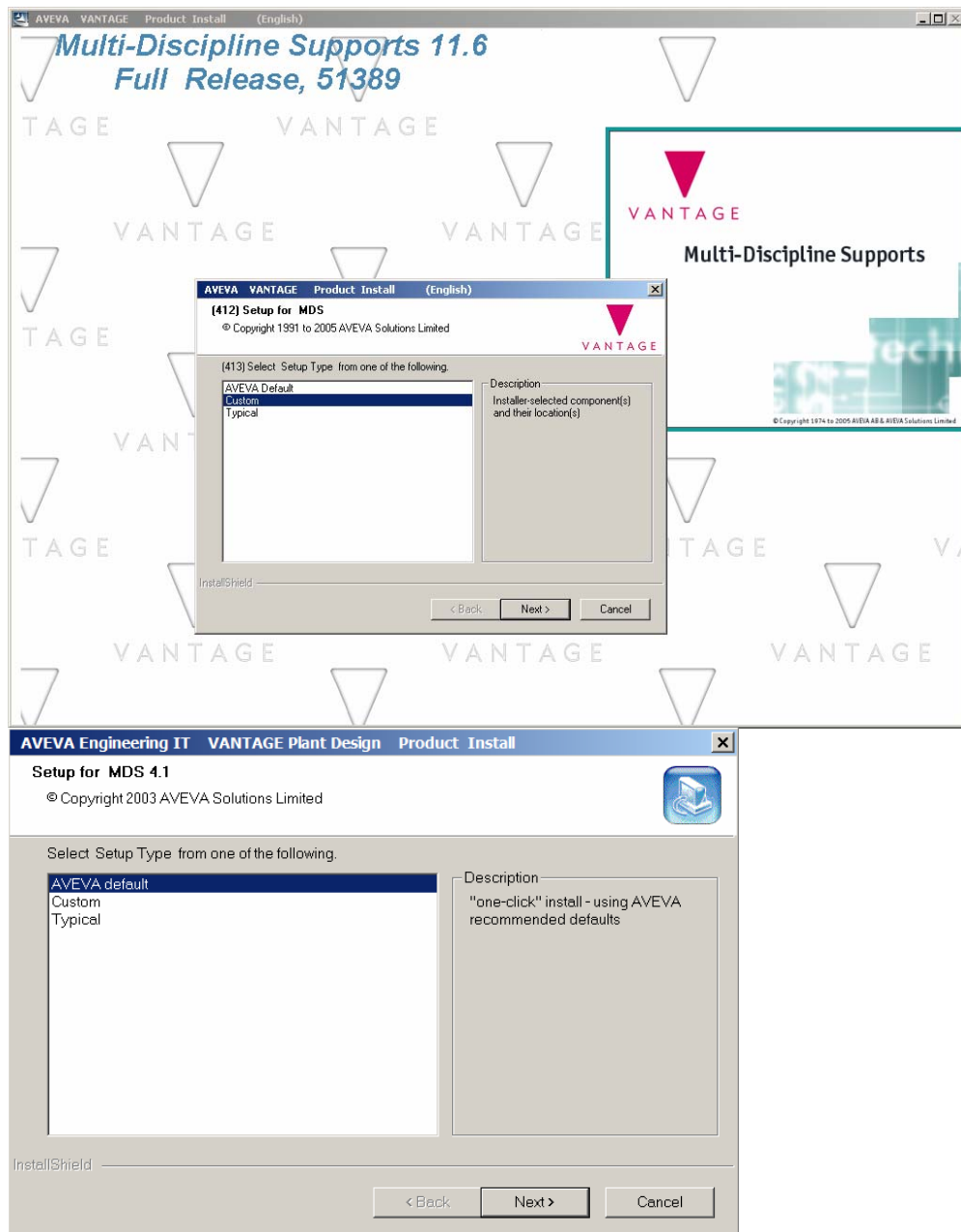
Note that the selected product folder must obey PDMS folder name rules (ie. no blanks or most special characters in the folder name).

- the base product folder (not recommended unless either, you
 - will only run the base product as enhanced by this product, or,
 - are prepared to handle the changes when switching between standard base and enhanced products.

3.1 Software Installation

Access the supplied CD-ROM, and after reading the release notes, select the “Install” gadget, or navigate through the release directory and execute the setup.exe program.

This will then guide you through the installation process, which is a series of Dialogs *like* those that follow. Details may vary according to the selections you make and your environment.



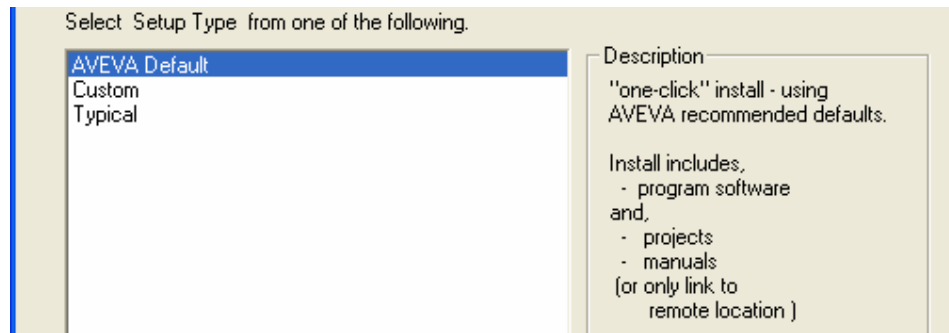
To commence with the installation select the type of installation required.
 Highlight each SetupType to display the summary Description of what it does.
 "AVEVA Default" gives least user control, "Custom" gives most.

Then the Dialogs will depend on the SetupType selected.

3.1.1 Default Installation

[-----]

You had selected,



-----]

This is a "one click" install using recommended defaults for target locations for the different parts of the software for a normal user.

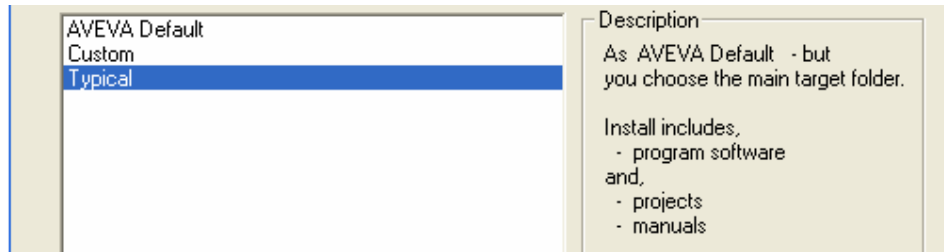
The install then starts and finishes without further installer responses.

See section 3.1.4 Configure & Associate Options

3.1.2 Typical Installation

[-----]

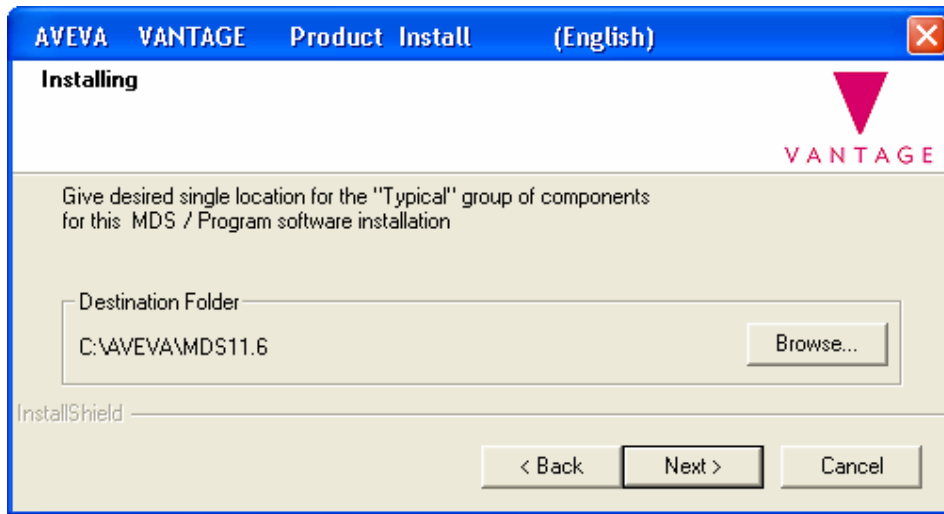
You had selected,



-----]

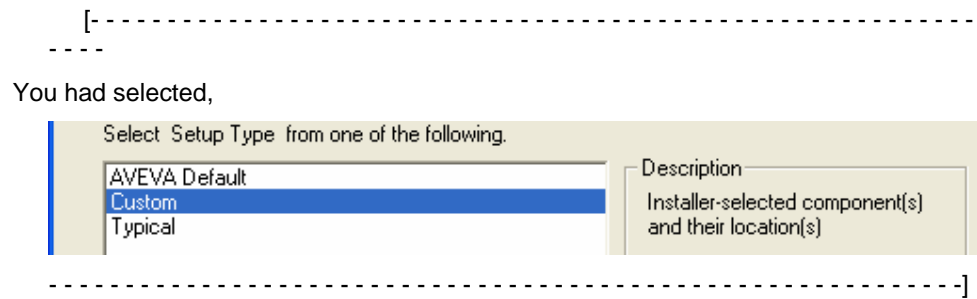
This is as the default installation but the installer selects the location for the same product selection as AVEVA Default.

The installer will be presented with the destination folder selection form as follows.

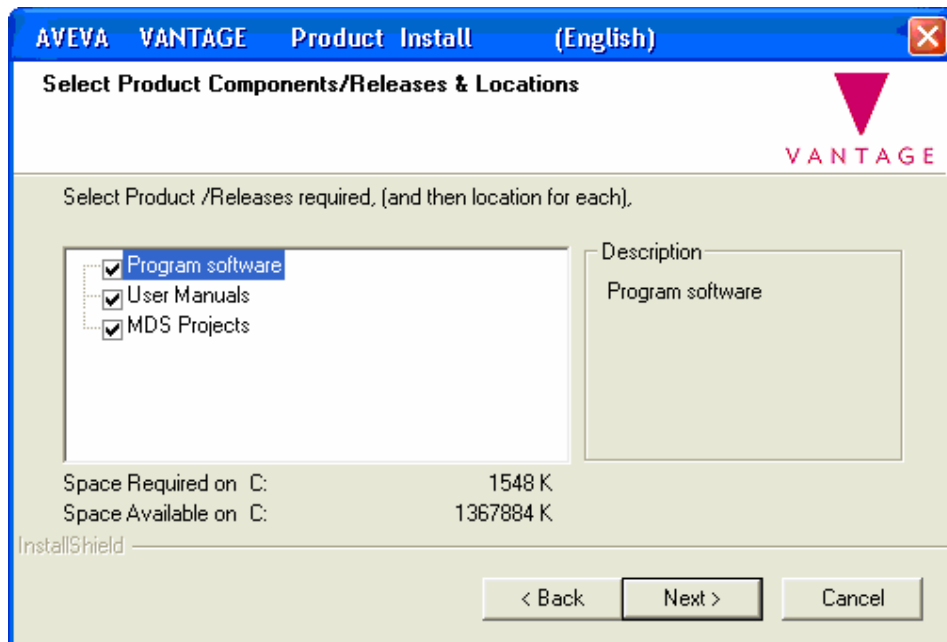


After modifying the target if desired, select the next button to start the installation
See section 3.1.4 Configure & Associate Options

3.1.3 Custom Installation



This allows the installers to select the components of the release to be installed, when this is selected the installation will commence and the installer will see the following screen to select the components.



Select the required components from the list available and select the next button.
The installer will then be presented with a location form for each of the components selected as below.

AVEVA VANTAGE Product Install (English)

Installing Program software

VANTAGE

Give desired location for Component PROGRAM

Destination Folder
C:\AVEVA\MDS11.6

Browse...

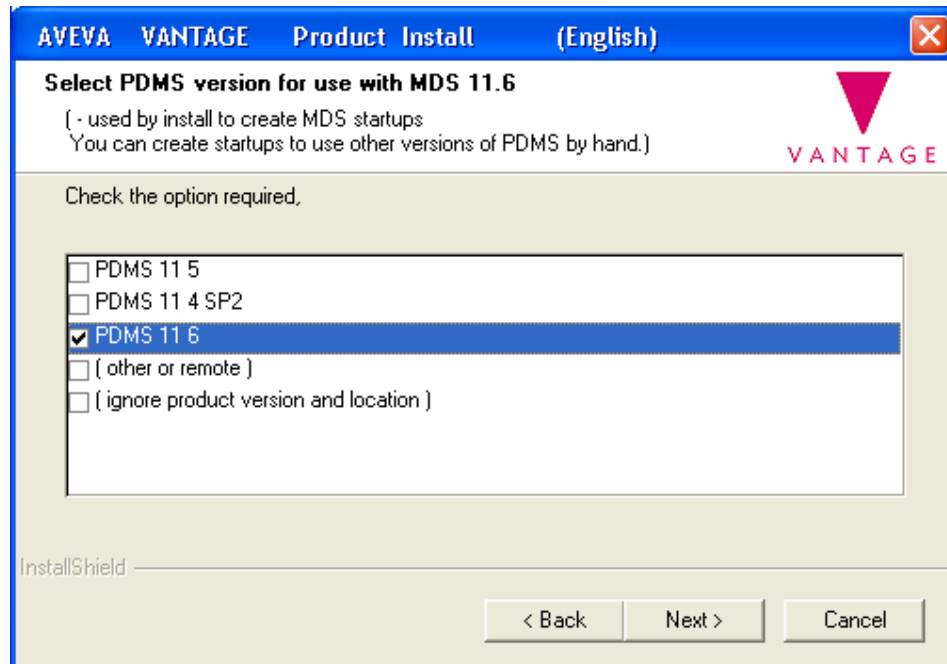
InstallShield

< Back Next > Cancel

Accept or change as desired.

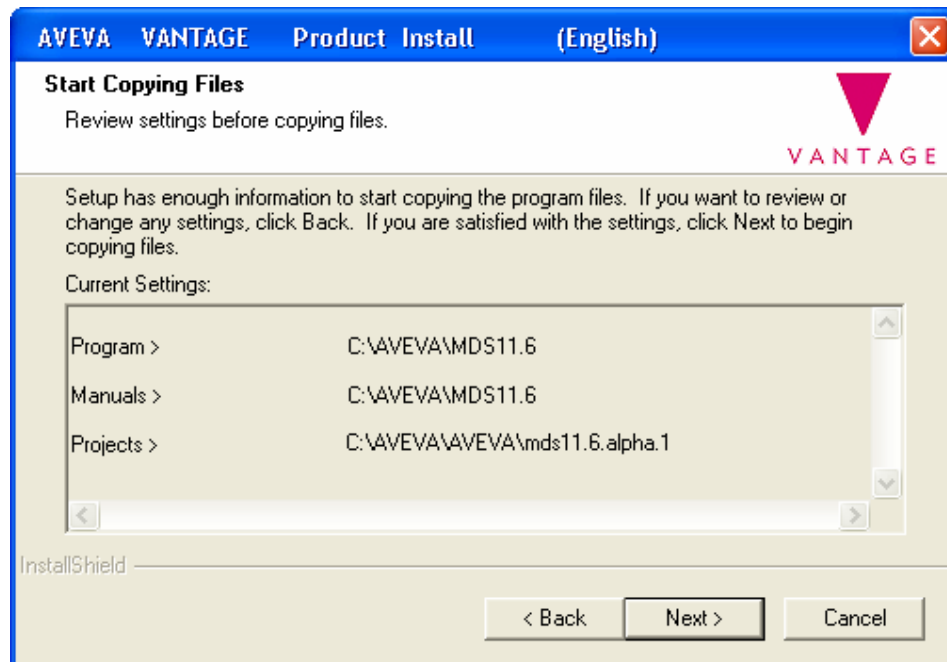
3.1.4 Configure & Associate Options

Depending on the SetupType and options, the next Dialogs get your selection(s) for associating the product with other co-operating products, offering valid base versions that can be found on the box or inviting you to define a remote location.



3.1.5 Confirm Selections

Finally a confirmation form is displayed so the installer can confirm the location selected or go back to reselect the destination folders.

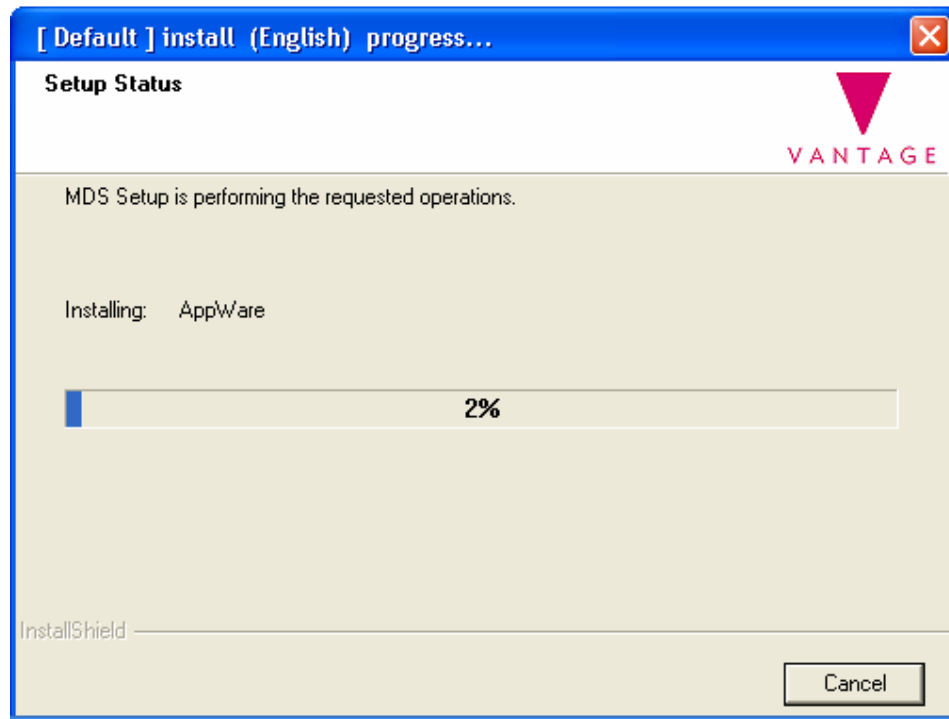


Select the,

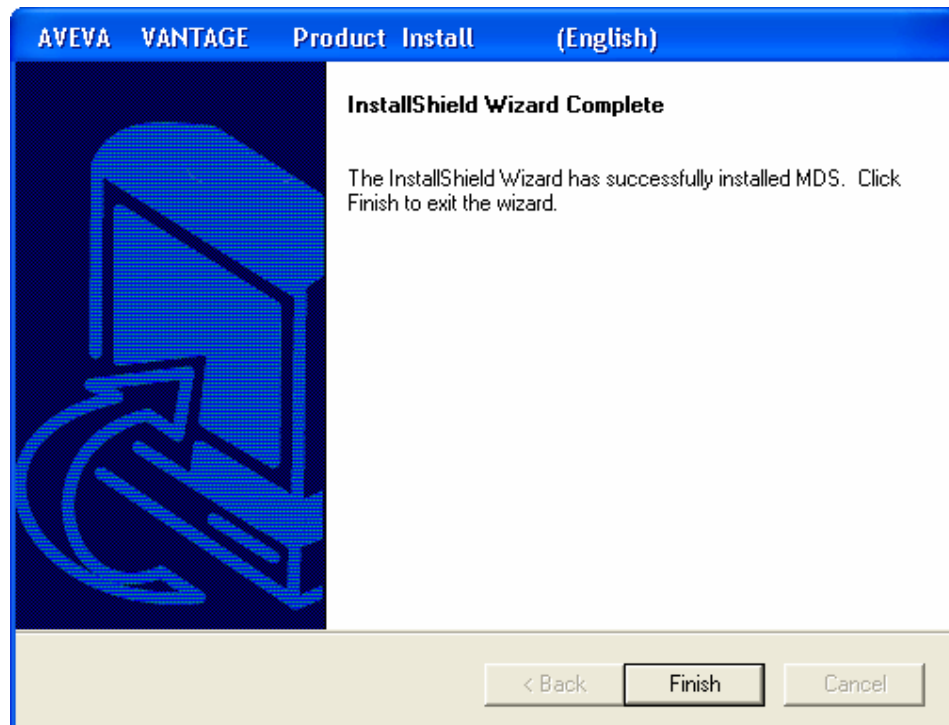
- Back button to redefine the installation
- Next button to start the installation

3.1.6 Download and Finish all Installation Type

Installation activity is indicated in the Install Progress display.



....until finished,



Select the finish button to complete the installation process.

3.2 Installed Configuration

3.2.1 Files Configured by the Install

To work with the base product, this product needs to modify the standard base product settings and create some more.

If the base product is already installed, all the connections for this product and the base will be automatically setup for the enhanced product.

Note that the selected product folder must obey PDMS folder name rules (ie. no blanks or most special characters in the folder name).

Files, MDS_pdms.bat and MDS_evars.bat, created and configured during the install and found in the product folder, effectively replace pdms.bat and evars.bat respectively.

MDS_pdms.bat is created from a copy of the base product pdms.bat file.

MDS_evars.bat calls evars-MDS_program.bat which creates the settings described in section 3.3

For the duration of the product session, these product-specific files temporarily set enhanced paths to the base - leaving an unchanged original base setup.

Appendix H gives a more detailed description of the bat files created by the install and their usage.

Section 3.3 describes which variables must be set if you wish or need to set them “by hand” after the install.

MDS files are installed into folders which correspond to standard VM\PDMS structure and naming configurations:

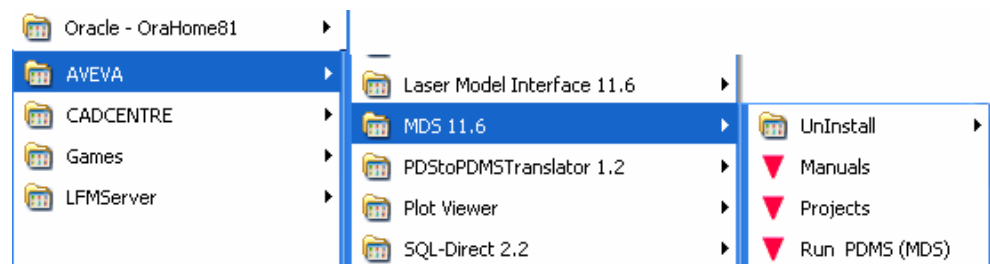
The install automatically adjusts the pmllib pml.index for any AppWare changes.

3.2.2 Start Menu entries, MDS

The install creates Start Menu entries, Programs > AVEVA > MDS >

- Run PDMS({product}) - will start the program
(runs ...{product_folder}\MDS_pdms.bat)
- Manuals - shows Manuals and useful documents of the product
(runs ...{product_folder}\manuals\mds116\index.htm)

For example,



3.3 Manual Configuration of the Product and Product Environment Variables

This AddOn product must add some new product-specific environment variables to those that are set by the base product's pdms.bat & evars.bat files.

Three types of modification are possible,

- new variables for this product
- re-definition of variables already set by the base product
- changes to items that can be "searchpaths"

Additionally for MDS, some functionality in MDS is provided by the AB_ADP (PDMS AddOn) product and the MDS environment variables need to be modified for AB_ADP to suit.

The install will have created a set of batfiles, particularly MDS_pdms.bat and MDS_evars.bat, configured for the product locations found.

However,

- if the installer wishes to create their own environment variable files

OR,

if at the time of install, any of the following is true,

- the base product is missing (or not found by the install)
- any cooperating AddOn product is missing (or not found by the install)
- any modifications are made to the product internal structure/naming
(This product has the same internal structure/naming as the base product, eg)
(...\product\pmlib has same function as ...base\pmlib)

then the evars need manual (re-)definition and must be modified as follows.

NOTE. If the base product has not been installed before this product, it must NOT then be installed into the same folder as ANY of the AddOn products.

Set Environment Variables

The base environment variables must be modified to include settings for MDS.

Environment variables modifications are made after running the base product's files evars.bat from pdms.bat

Some of these environment variables can be "searchpaths".

AVEVA "searchpath" variables are modified from the initial setting %EnvVar%, using a blank as the separator and usually PREFIXing the new value, in the form,

```
SET EnvVar={newEnvVarValue} %EnvVar2% %EnvVar%
```

This will force items in newEnvVarValue to be used in preference to those in %EnvVar2% or %EnvVar%

Searchpath variables need only be changed if,

- this product is not installed into the same folder as the base product
- the value to be added is not the same as its nearest neighbour

- Modify for AB_ADG (these are detailed in the Area Based ADG Install Guide))

AB_ADG must be called before MDS, as ABA appware can function without MDS Draft appware

Modified searchpaths (if AB_ADG not installed into base product folder)

pmllib
pdmsui
pdmsdflts
pdmsuser

Special variables for AB_ADG

Pdmsabalog	destination of the log files
Pdmsabahyper	destination of the plot files
Pdmsabaplot	destination of the plot files
Pdmsababatch	destination of the batch files
Pdmsabareport	destination of the report files
Pdmsabadata	the location of test datal files
Pdmslog	location of PDMSLOG files
Pdmslogopt	PDMSLOG files

- Modify for MDS (these are detailed in evars_for_MDS.bat, section "REM SPECIAL SETTINGS FOR MULTI DISCIPLINE SUPPORTS")

Modified searchpaths (if MDS not installed into base product folder)

Pmllib)	For MDS, pmllib & PDMSUI have special setting requirements,
Pdmsui)	
For base, PDMS 11.4 PDMS 11.5, VM/PDMS 11.6	you add only unsuffixed pmllib & PDMSUI unsuffixed pmllib & PDMSUI AND those suffixed 11_5 unsuffixed pmllib & PDMSUI AND those suffixed 11_5 AND 11_6

Pdmsdflts
Pdmsplots

Variables modified for MDS

Pdmsuser	destination of the user files
-----------------	-------------------------------

Special variables for MDS

mdsplots	destination of the MDS plot files
mdsreports	destination of the MDS report files
mdsappware	the MDS folder name

If you modify the pmllib configuration after the install, the first operation when first running the product is to select the Command window and run the command,

"pml rehash all"

Environment Variables for Projects

Except for the standard sample projects supplied with the products, the install cannot create the environment variables for your projects during the install.

When you create your projects (as described in the VPD/VM manuals), you must set these - adding into one of,

- your user's Environment variables set (not recommended)
- as instructions in one of the startup batfiles

- for Projects for use with MDS

Note that MDS defines 2 additional environment variables, 'mdsdflts' & 'mdsinfo', for the VPD/VM project folders ...mds\mdsdflts and ...mds\mdsinfo used by MDS.

All other projects, which will be required to use the MDS applications, will need to have the two extra folders created, and the relevant environment variables set to point to these two new directories in the 'evars.bat' file, e.g.

For a project called 'abc' create the two required folders by copying the .../mds/mdsdflts and .../mds/mdsinfo folders to where the 'abc' project folders are located, and rename them accordingly, i.e. rename the copied folders mdsdflts and mdsinfo to abcdflts and abcinfo respectively.

The 2 batch files called mds_pdms.bat and evars_mds.bat that have been modified to use a standard installation may be copied into %pdms_installed_dir% and modified as necessary.

Project variables for MDS

Mds000	project MDS, 000 files
Mdsmac	project MDS, mac files
Mdspic	project MDS, pic files
Mdsiso	project MDS, iso files
Mdsdflts	project MDS, dflts files
Mdsinfo	project MDS, info files

and similar project environment variables for any other projects"

and finally,

add all your projects **xxxdflts** environment variables to searchpath variable **PDMSDFLTS**

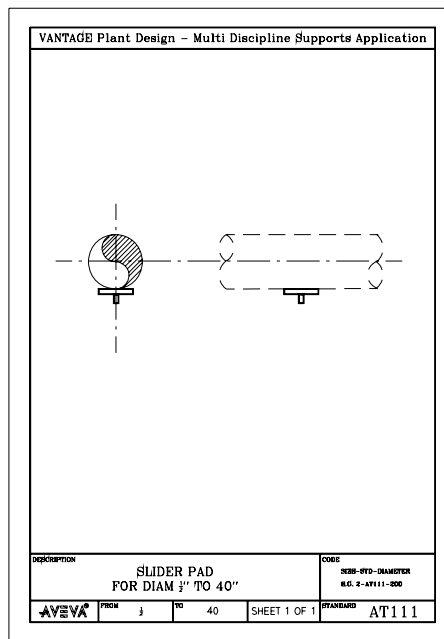
4 Test Projects

There are no Test projects in this release.

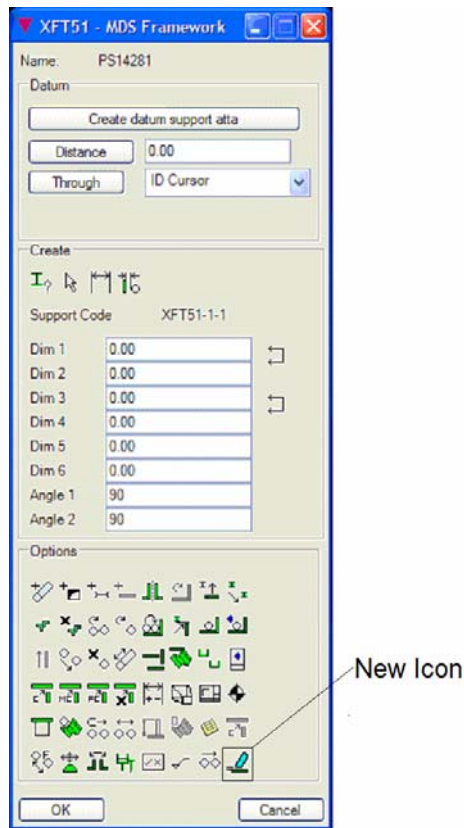
5 Enhancements

The following enhancements have been made to MDS at this release.

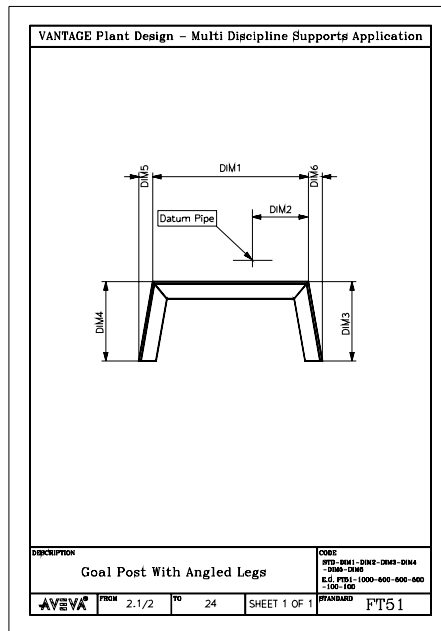
- Upgraded to work within the Vantage Plant Design 11.6 sp1 and Vantage Marine 11.6 Outfitting with PDMS environments.
- New ancillary type added called AT111 for Circular Pads as standard below.



- MDS drawing production enhanced to add bolt hole dimensions for u-bolts.
- Supports can now be added on cambered deck, this has been achieved by allowing non orthogonal creation of a steelwork framework that snipe the end of the sections to the correct angle. This will happen automatically when a panel or steelwork is identified and there is an extra icon added to the framework creation forms to identify a section and extend and set the correct cutting plane manually. An example of support frame FT09 shows the new icon available.



- A new framework type FT51 has been added that allows the creation of a support frame with angled legs as per the standard below.



- The system provides the ability to set a connection reference to a read only hull model using the existing Bed/Anchor Plate Reference form available in MDS. It has been enhanced to provide a one way connection from a steelwork section to the hull model.

Appendix H: Installation-Created batFiles

Configuration set by Standard Installation

The installation will create batfiles which reflect the installed settings. Using these, and some "demo" settings, the program should run "out-of-the-box". While the install can create correct evars for the program items, it cannot know about your projects, so you will have to modify the environment variables for your projects and any other non-standard configuration.

Note that, as this product can be installed into its own or the PDMS folder and, as you may not always want to run PDMS with this product enabled, the PDMS startup batfile, `pdms.bat` and its main environment-setting batfile, `evars.bat`, are left UNCHANGED.

The batfiles created by the install follow a similar naming convention. Each AddOn product creates (at least) 3 new equivalent batfiles that work like PDMS's `pdms.bat` & `evars.bat` files - but extended to include the specific product(s),

- `{product}_pdms.bat`
- `{product}_evars.bat`
- `evars_for_{product}`

`{product}_pdms.bat`,

- is basically a copy of the `pdms.bat` file contained in the selected PDMS version folder,
 (`pdms.bat` may be different for different versions of PDMS)
 (may have company-specific modifications which are then automatically included)
- modified for use with this product

`{product}_evars.bat`,

- calls the standard PDMS `evars.bat` in the selected PDMS folder
 (`evars.bat` may have company-specific modifications which are then automatically included)
- applies the `evars` modifications for this product and version
- checks locations before use
- checks (and corrects temporary) searchpaths for minimum length
- is safer because it always calls the batfiles provided with
 the specific version of the product
- can set specific project environment variables
- (clever and efficient - but not easily read - results can be seen in `batch_evvars.bat`)

`evars_for_{product}`,

- is a "longhand" version of `{product}_evars.bat`
- for "searchpath" `evars`, simply adds the product path to
 the `evar` (even if it is already included in the path)
- ("dumb" but readable)

If you use the `evars_for_{product}` batfile, you must ensure that it is updated as necessary when new versions of products are installed or used.

"Super" batfiles to configure many PDMS AddOns

There are also "super" batfiles to configure many PDMS AddOns,

- arranged in product sections
- each product section is only activated if its location is set, in statements like,
set {product}_installed_dir=...

PDMSAddOns_evars.bat,

- similar to {product}_evars.bat
- calls the batfiles provided with the specific-versions of the products selected for use
- always safe because batfiles for the specific-versions of the products selected are used

evars_for_PDMSAddOns.bat,

- similar to evars_for_{product}
- batfile evar settings for each product may not remain correct for product\version in use
- update as necessary for new or different versions of products

Some specific groups of PDMS AddOns also have group-specific partial PDMS_AddOns batfiles and, where a number of AddOns are commonly/more often than not used together, or rely on other products for their full functionality, their batfiles are presented in the AddOns format.

MDS is an example; it requires AB_ADP for its drawing output and so the MDS batfile also includes the necessary settings for AB_ADP.

In the "rely on" cases, the batfile will warn if the dependent product settings are not valid.

"Replaced" Files

The product may need to "replace" standard PDMS files.

In this case, before installing, these files will be copied into a separate backup location and the new files will also be installed into their own location(s).

Entries in the product batfile will set the correct files for the product and, on normal exit from the product, reset for standard PDMS.

If the run ends abnormally, you will have to reset for standard PDMS.

End Of Document